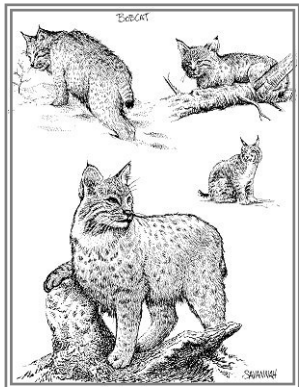


Included in this pamphlet are some of the mammals you are more likely to see during your visit to Lee.

Lee has many more less common or hard to find mammals such as southern flying squirrels, fox squirrels, rabbits, bats, and many species of rats and mice.

For more information about mammals found at Lee, ask a park ranger or research using field guides which can be bought at any bookseller or borrowed from a public library.

Illustrations by Bob Savannah and Tom Kelley, US Fish and Wildlife Service



Notes:

Series of horizontal lines for taking notes.

Lee State Park
487 Loop Rd
Bishopville, SC 29010
(803) 428-5307
www.SouthCarolinaParks.com



Park Hours: ..... 9am-5pm
Extended hours during DST
Office Hours: Year-round ..... 11am-12pm

The South Carolina Department of Parks, Recreation & Tourism does not discriminate against anyone on the basis of race, sex, color, national origin, age or handicap, and is an equal opportunity employer.

Common Mammals of Lee STATE PARK



Lee State Park's Mission

To protect and preserve the significant natural and cultural resources of the park while promoting stewardship through educational activities that emphasize the Lynches River, and sandhills habitat, and other important features of the park.

## Habitat

Lee is located in the sandhills region of South Carolina. The majority of Lee's habitat is considered the floodplain of the Lynches River which flows along the park's western boundary. Many of the mammals found at Lee are adapted to survive in both wetland and upland

## White-tailed Deer

*Odocoileus virginianus*

Deer are the largest mammals found in the park.

Places to see: Loop Road, the park entrance road, the picnic/day use area, the showing area

Time to see: dawn and dusk



## Eastern Gray Squirrel

*Sciurus carolinensis*

Gray squirrels are the most commonly seen mammal here at Lee.

Places to see: campground, the park entrance road, the picnic/day use area

Time to see: daytime

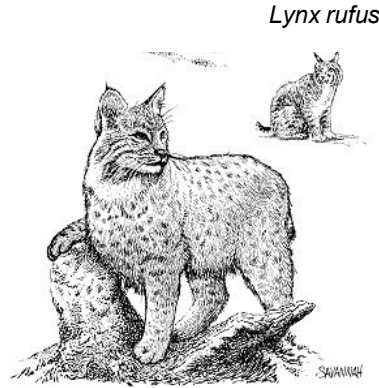


## Bobcat

Elusive animals.

Places to see: Loop Road, the park entrance road

Time to see: night but can be infrequently seen during the day



## Red Fox & Gray Fox

*Vulpes fulva*

*Urocyon cinereoargenteus*

Gray foxes are much more common to Lee than red foxes.

Places to see: park roads

Time to see: night



Red Fox

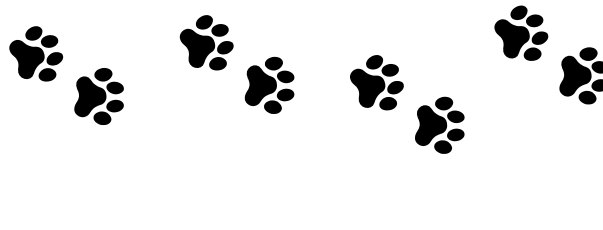
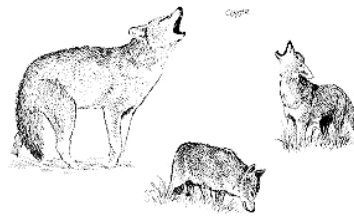
## Coyote

*Canis latrans*

A recent immigrant from the west.

Places to see: park roads

Time to see: night but can be infrequently seen during the day



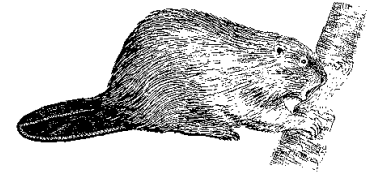
## Beaver

*Castor canadensis*

Sometimes heard and not seen. Will slap tail on water to try to frighten.

Places to see: wetlands off of Loop Road

Time to see: dusk till dawn but can be infrequently seen during the day



## River Otter

*Lutra canadensis*

Can be mistaken for a beaver and visa versa.

Places to see: wetlands off of Loop Road and the Lynches River, day use area ponds

Time to see: daytime



## Raccoon

*Procyon*

Common masked bandit of human habitations.

Places to see: the park entrance road, the picnic/day use area

Time to see: night



## Opossum

*Didelphis marsupialis*

Common to see walking on roads

Places to see: Loop Road, the park entrance road

Time to see: night

